

An aerial photograph of Buffalo, New York, showing the University at Buffalo campus. The central focus is the University at Buffalo's main building, a large, multi-story structure with a prominent central tower. To the left of the main building is a large, open lot, likely a parking area. To the right is a long, low building, possibly a library or administrative building. The surrounding area includes residential neighborhoods with houses and trees, industrial areas with large warehouses and parking lots, and a railway yard with several trains. The sky is overcast.

CONNECTING BROADWAY-FILLMORE

FALL 2021

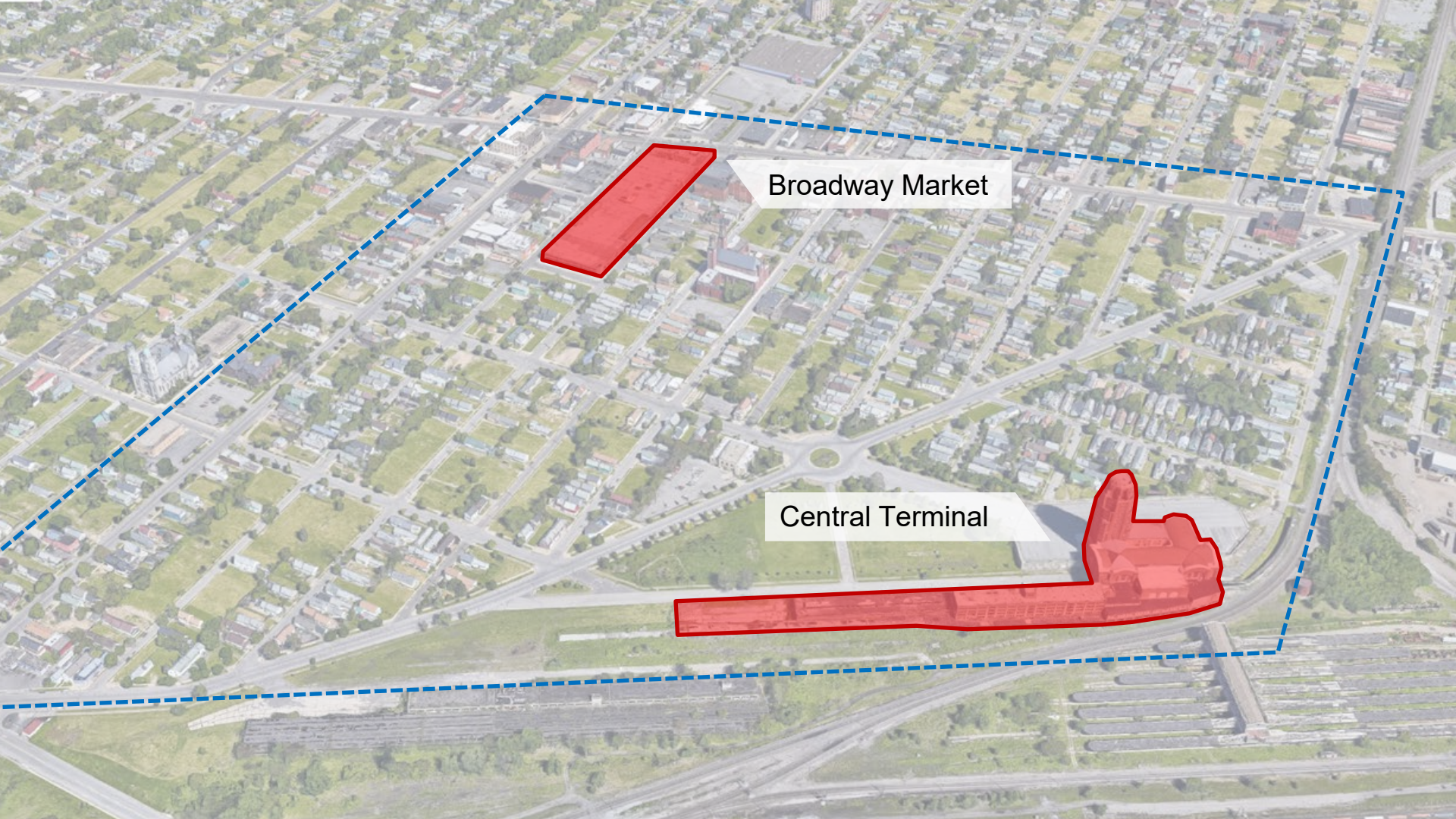
UNIVERSITY AT BUFFALO— ARC607/URP584582



Image by Broadway Market / CJS Architects

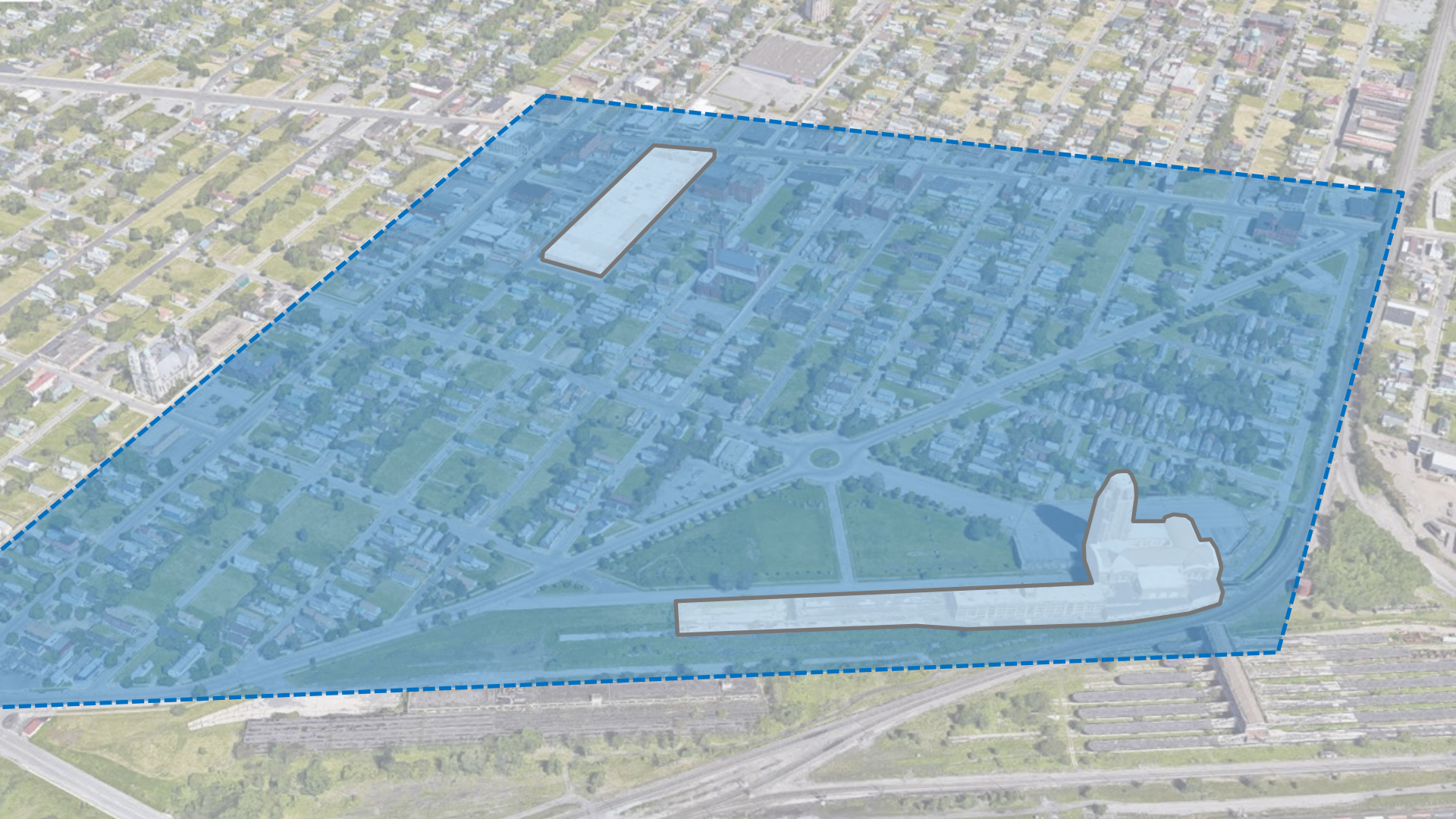


Image by Spectorgroup



Broadway Market

Central Terminal

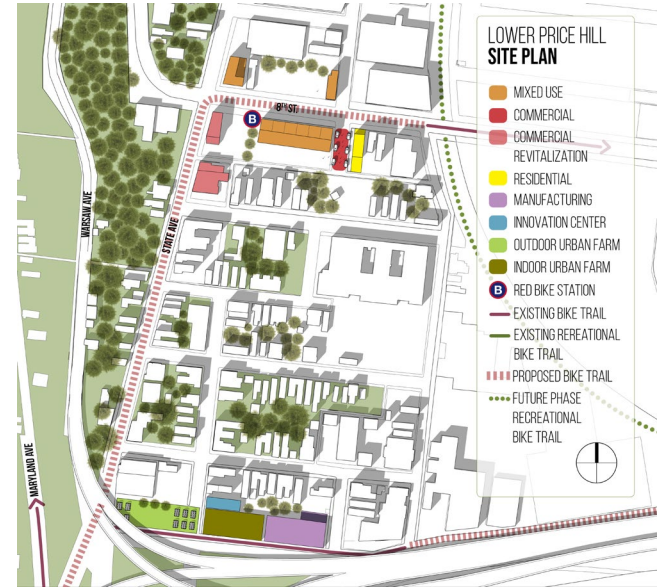






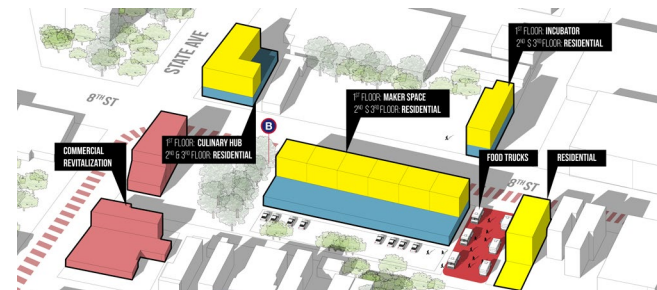
LOWER PRICE HILL CONCEPT PLAN

- Proposed Bike Lane
- Existing Bike Trail
- Existing Bike Trail (Recreational)
- Green Network
- Proposed Recreational Bike Trail
- Future Phase Recreational Bike Trail
- Red Bike Station
- Co-working Opportunity Area
- Recreational Area
- Urban Manufacturing and Farm

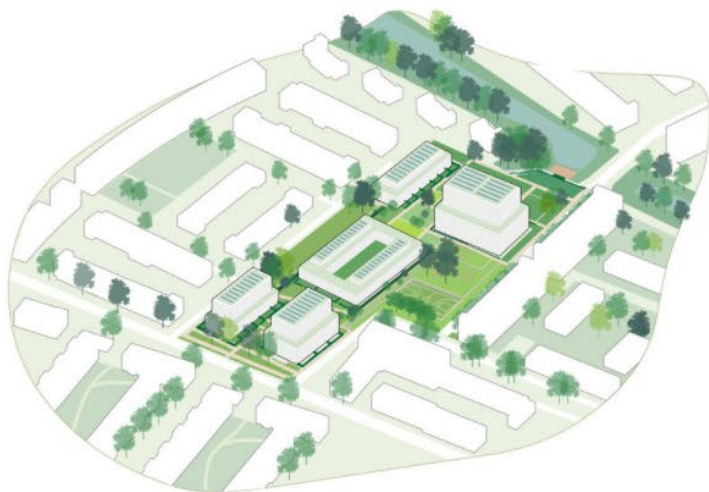


LOWER PRICE HILL SITE PLAN

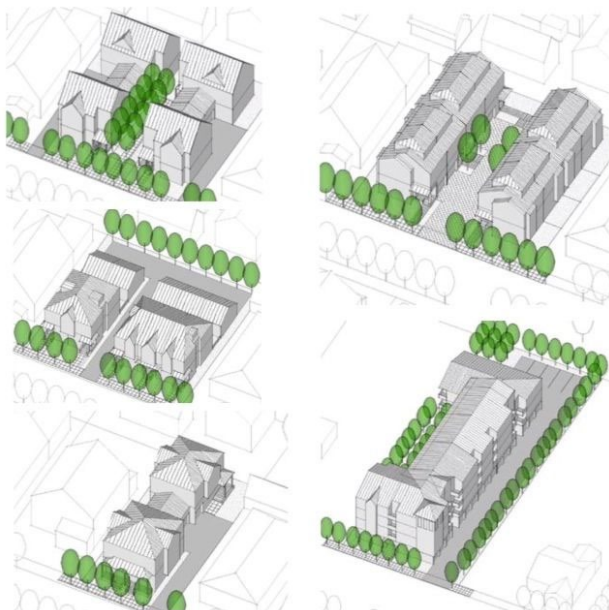
- MIXED USE
- COMMERCIAL
- COMMERCIAL REVITALIZATION
- RESIDENTIAL
- MANUFACTURING
- INNOVATION CENTER
- OUTDOOR URBAN FARM
- INDOOR URBAN FARM
- RED BIKE STATION
- EXISTING BIKE TRAIL
- EXISTING RECREATIONAL BIKE TRAIL
- PROPOSED BIKE TRAIL
- FUTURE PHASE RECREATIONAL BIKE TRAIL



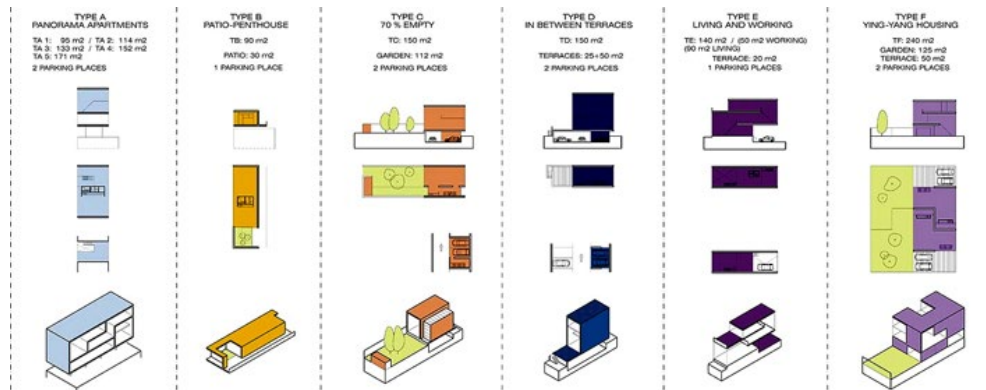
Images by students – University of Cincinnati



Images by Echo Urban Design - Rotterdam



Infill housing – Greater Places, Portland



Urban housing typology - European

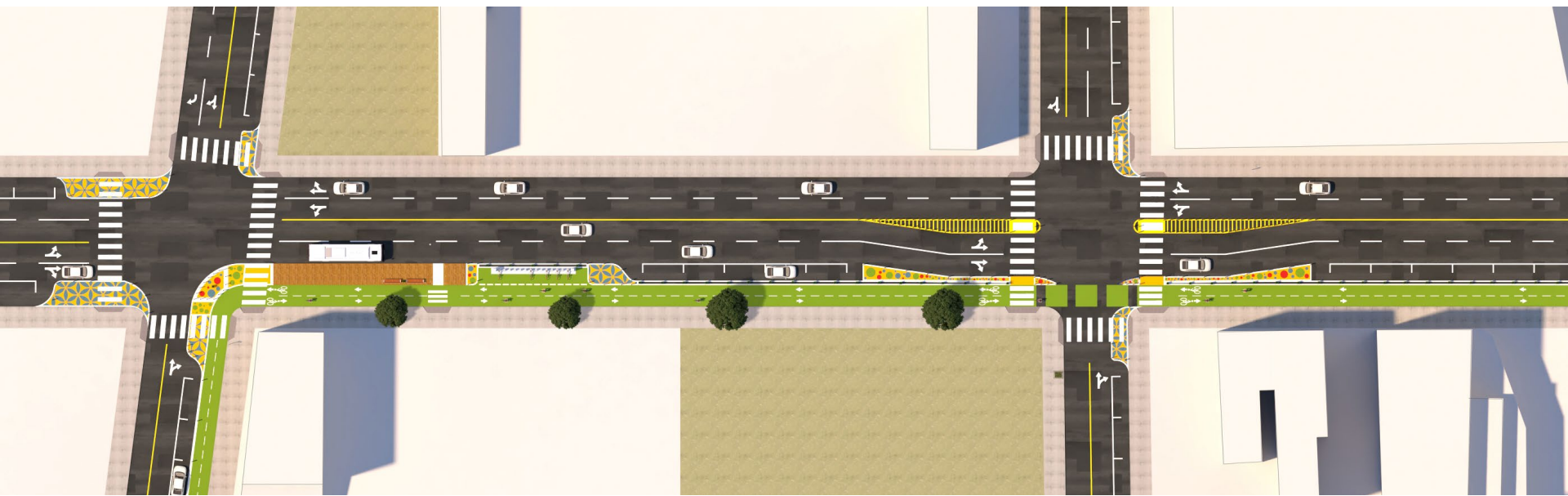
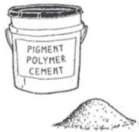


Image by students – University of Cincinnati

PIGMENT POLYMER CEMENT



Typical Dimensions: Varies: 4.5 in x 7 in jars - 5 gallons bucket.

Estimated Cost: Approximately \$3 / sq. ft.

Overview: Versatile, durable, colorful pigmented cement, also referred to as "Endurablend"

STREET BOND PAVEMENT COATING



Typical Dimensions: Sold in 5 gallon bucket that includes 3 key components that are mixed to create the coating: 1 unit of coloring element (pint), 1 unit of SB 150 (3 1/2 gallons), and 1 unit of actifier (quart).

Estimated Cost: \$120 / sq. ft. (Note that multiple coats may be needed).

Overview: Pavement coating appropriate for interim design uses.

Tactical Urbanist's Guide to Materials and Design, v.1.0



Image by Street Plans Collaborative – Louisville, KY